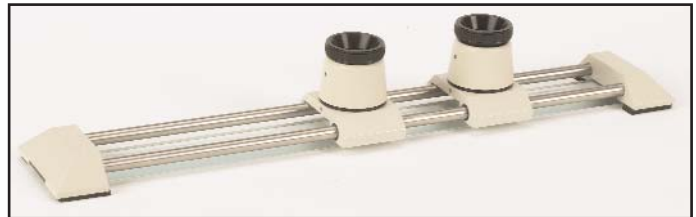


## Measuring Scales: CA Series

### Typical Applications

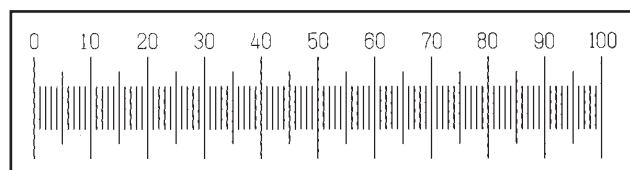
Measurement of:

- ◆ Artwork
- ◆ Industrial and Commercial Photography
- ◆ Printing
- ◆ Maps
- ◆ Packaging
- ◆ PCB Manufacture
- ◆ Navigation Charts
- ◆ Any other flat objects



A range of versatile portable measuring instruments which combine the accuracy of finely divided glass scales with the simplicity of magnifiers. These are ideal tools for the inspection bench, drawing office, workshop and laboratory when measurements exceeding the capacity of a magnifier on its own are needed. The measuring scale needs to be in close contact with the flat specimen.

Where this is not possible the use of a co-ordinate measuring system such as the Inspecta Micromax is recommended. (See separate leaflets).



Scale image as might be seen through magnifier

The instrument is built around a glass measuring scale, an accurate dividing in vacuum deposited chromium on the under side of a 6mm thick rectangle of glass. This is mounted in a metal frame finished in white stove enamel with sliding magnifiers which can be focussed individually on the critical points of the specimen to be measured. The slides run on stainless steel bearing rods.

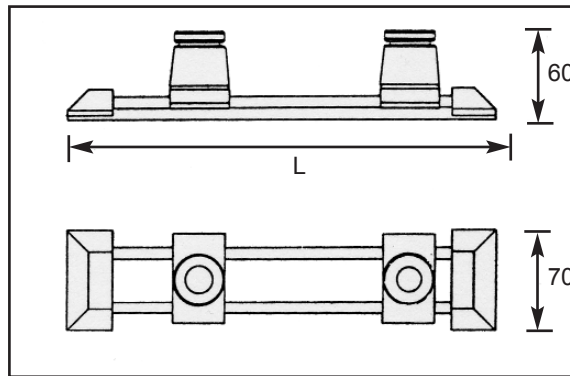
The instrument is placed with the measuring scale in close contact with the specimen to be measured. One magnifier is positioned over one end of the length, the second magnifier at the other end. When only one magnifier is available (as in the smallest instrument) it must slide from end to end.

If one of the datum points corresponds to zero on the scale, the length will be that read off at the other end. However, it may be easier to align the scale with the length to be measured and to then deduce the length from the two readings.

## Technical Specifications

	Scale Length	Sub-divisions	No. of Magnifiers	Dimensions (l x w x h)	Weight Kg
Cat. Ref: <b>CA150</b> Order Code: <b>50E02020</b>	150mm	0.1mm	one	220x52x60mm	0.5
Cat. Ref: <b>CA310</b> Order Code: <b>50E02021</b>	300mm	0.1mm	two	380x52x60mm	0.8
Cat Ref: <b>CA710</b> Order Code: <b>50E02022</b>	450mm	0.1mm	two	535x52x60mm	1
Cat. Ref: <b>CA510</b> Order Code: <b>50E02068</b>	12"	0.005"	two	14"x2"x2.4"	0.8

Each instrument is supplied ready for use in a polished wooden carrying case.  
Other scales and lengths are available to special order.



### Replacement glass scales

	Scale Length	Sub-divisions
Cat. Ref: <b>PCA150</b> Order Code: <b>50B02023</b>	150mm	0.1mm
Cat. Ref: <b>PCA300</b> Order Code: <b>50B02024</b>	300mm	0.1mm
Cat. Ref: <b>PCA500</b> Order Code: <b>50B02025</b>	12"	0.005"
Cat. Ref: <b>PCA700</b> Order Code: <b>50B02026</b>	450mm	0.1mm

### Other Products in the Inspecta Range:

- ♦ Magnifiers with Reticles
- ♦ Microscope Components
- ♦ Portable Microscopes
- ♦ Video Inspection
- ♦ Depth Scopes
- ♦ Thru Hole Scopes
- ♦ Calibration Products
- ♦ Microscope Systems
- ♦ Co-ordinate Measurement
- ♦ Measuring Microscopes



Visit our website on [www.pyser-sgi.com](http://www.pyser-sgi.com) for further information on the complete range of products available from Pyser-SGI Limited.

Pyser-SGI Limited reserves the right to amend these specifications.

**PYSER - SGI LIMITED**  
Fircroft Way, Edenbridge, Kent,  
United Kingdom, TN8 6HA  
Telephone: +44 (0)1732 864111  
Facsimile: +44 (0)1732 865544  
Email: [sales@pyser-sgi.com](mailto:sales@pyser-sgi.com)  
[www.pyser-sgi.com](http://www.pyser-sgi.com)

